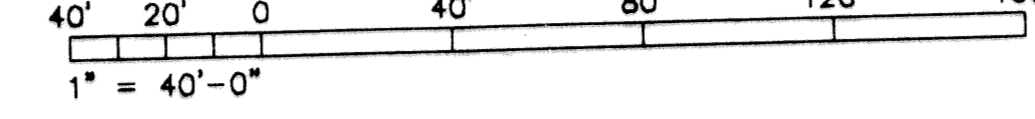


PLAT OF BENT TREE P.U.D. PHASE 1

IN PART OF SECTION 2, TOWNSHIP 42 SOUTH, RANGE 42 EAST
CITY OF PALM BEACH GARDENS, PALM BEACH COUNTY, FLORIDA
SHEET NO. 4 OF 5

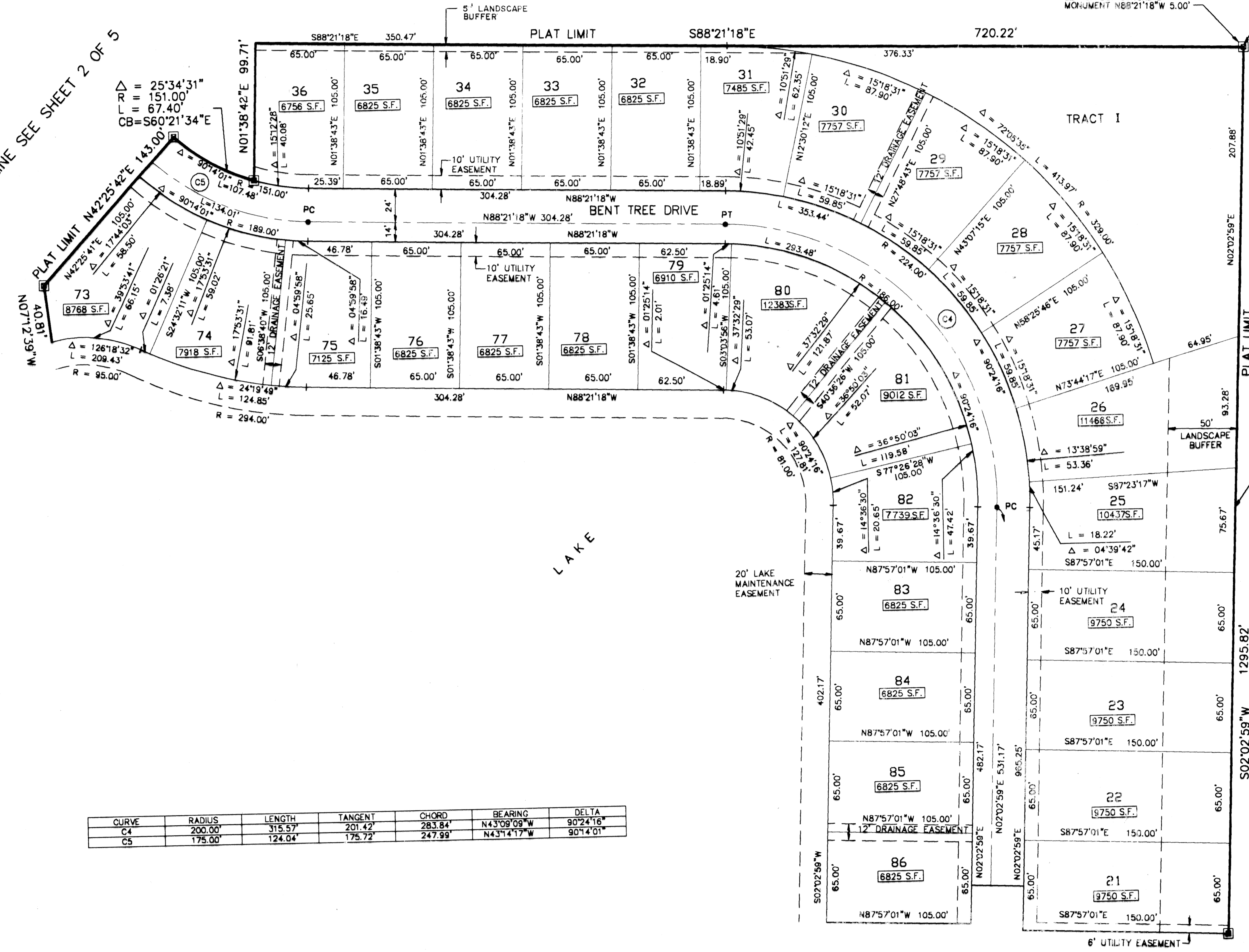
GEE & JENSON
ENGINEERS - ARCHITECTS - PLANNERS, INC.
WEST PALM BEACH, FLORIDA
MARCH 1994



UNPLATTED

STATE OF FLORIDA
COUNTY OF PALM BEACH
This plat was filed for
record at _____ M. this day
of _____ 1994, and duly
recorded in Plat Book No. _____
on Pages _____ thru _____
DOROTHY WILKEN
Clerk Circuit Court
By _____ d.c.

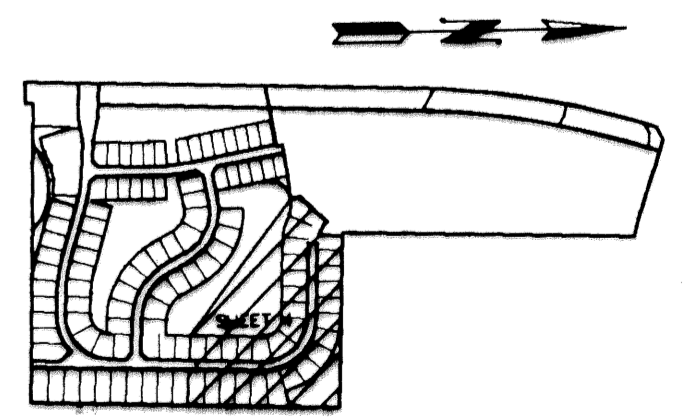
MATCH LINE SEE SHEET 2 OF 5



CURVE	RADIUS	LENGTH	TANGENT	CHORD	BEARING	DELTA
C4	200.00'	315.57'	201.42'	283.84'	N43°09'09"W	90°24'16"
C5	175.00'	124.04'	175.72'	247.99'	N43°14'17"W	90°14'01"

EAST LINE OF
WEST 1/2 OF
SOUTHEAST 1/4
OF SEC. 2

SHADY LAKES
P.B. 43 PG. 6-8



MATCH LINE SEE SHEET 3 OF 5

SUBDIVISION * Bent Tree P.U.D. Ph. 1
BOOK TB PAGE 92
FIELD FLOOD MAP *
QU. D. * ZONING
SE * ZIP CODE
PUD NAME CIPB Gardens
2/12/94

COMPUTED _____
DRAWN _____
CHECKED _____
APPROVED _____
JOB NO. 92-258

Plot Scale: 1"=40.0

Plotted: 5/2/1994 9:33am

C:\92258\BTREEP.L3